

SERVICE TRAINING:

Technical Call



UTC Building & Industrial Systems Confidential and Proprietary Information –
Not for Further Distribution

October 14 2018



Topics:

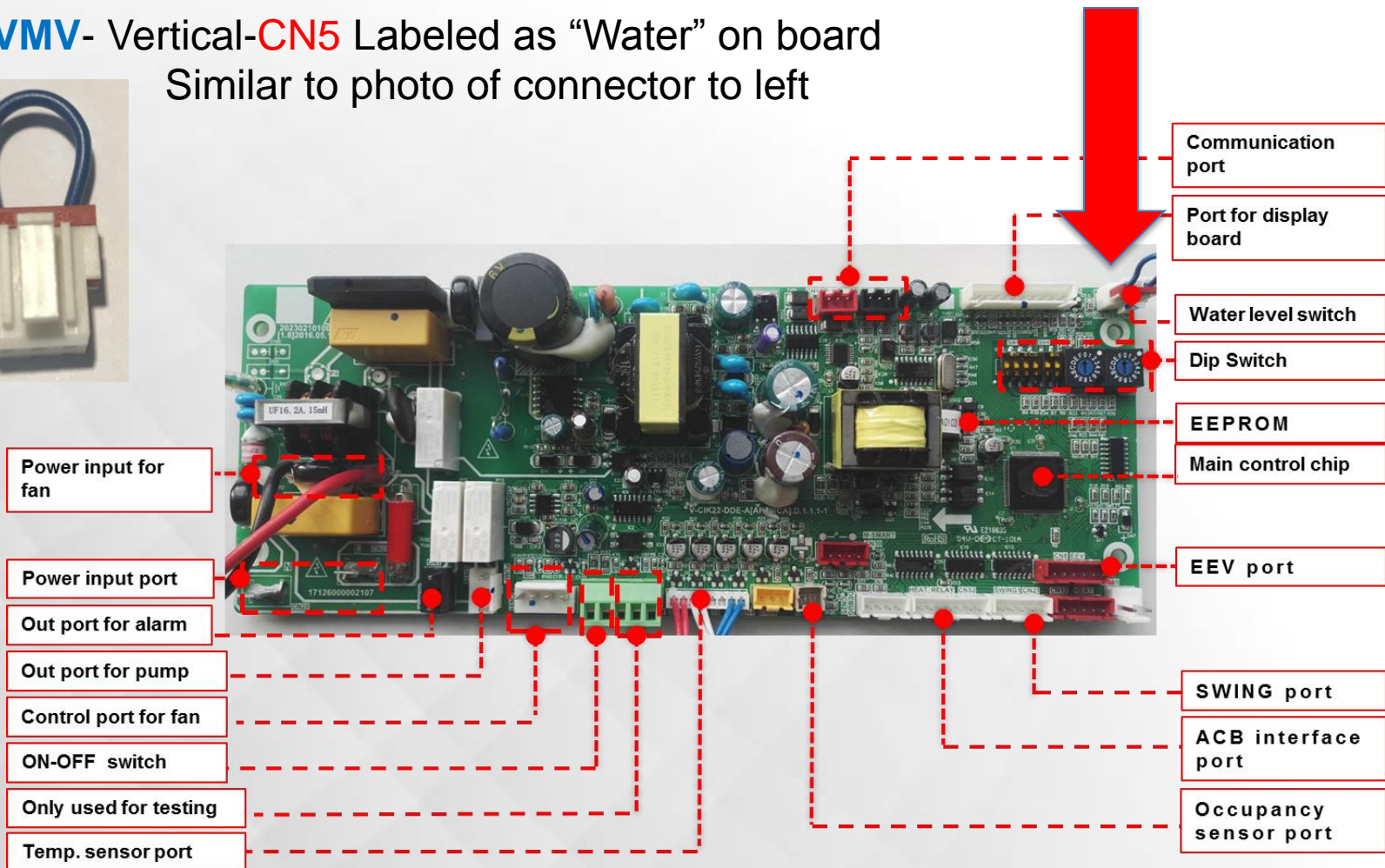
VRF External Drain Switch Safety

Training Classes

VRF Drain Safety 2 Pipe Heat Recovery

Technical Call

40VMV- Vertical-**CN5** Labeled as “Water” on board
Similar to photo of connector to left



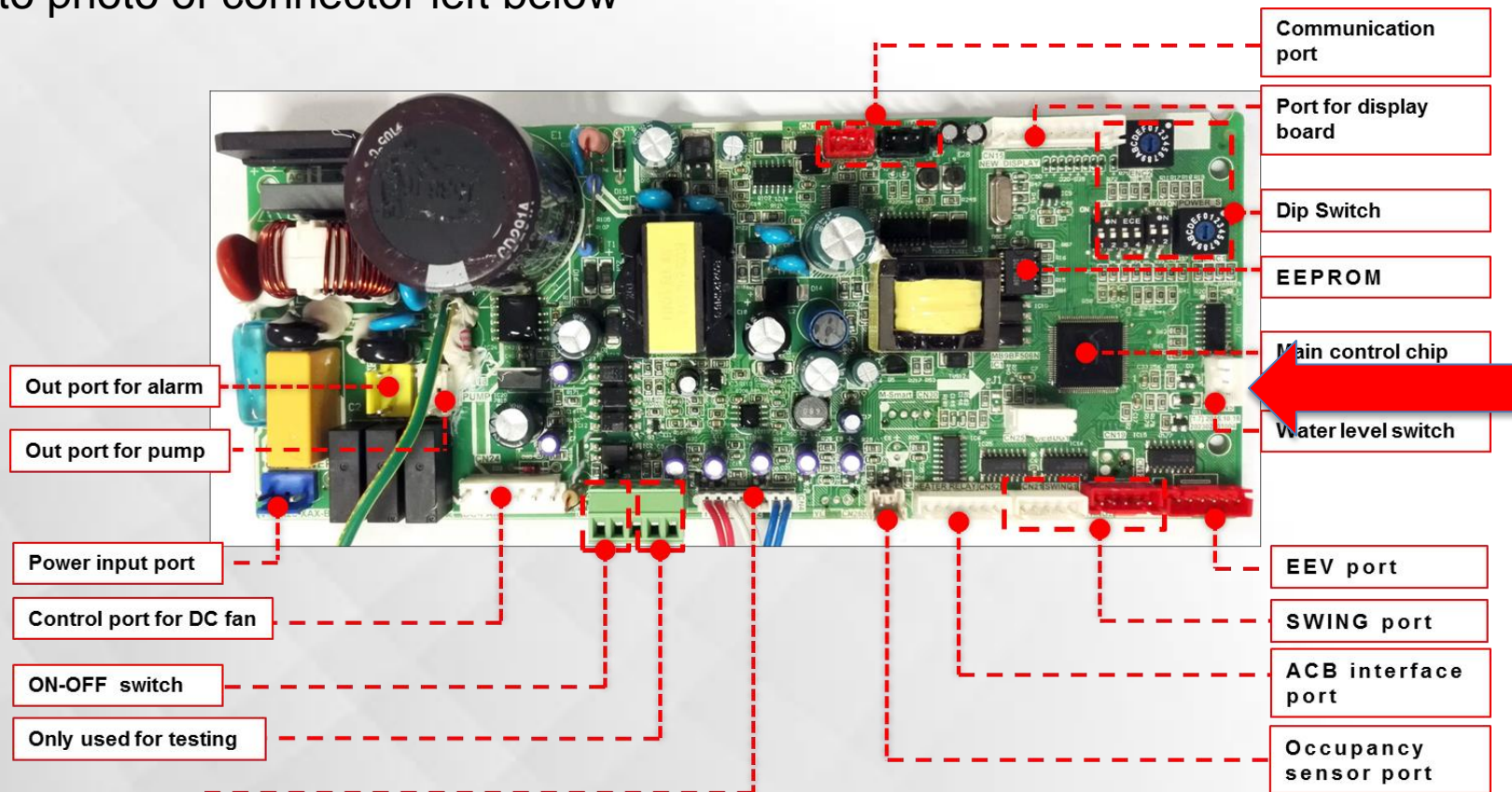
VRF Drain Safety 2 Pipe Heat Recovery

Technical Call

40VMM,VML-Ducted, VMC-Compact Cassette, VMR-Console recessed

CN5 Labeled as “Water” on board

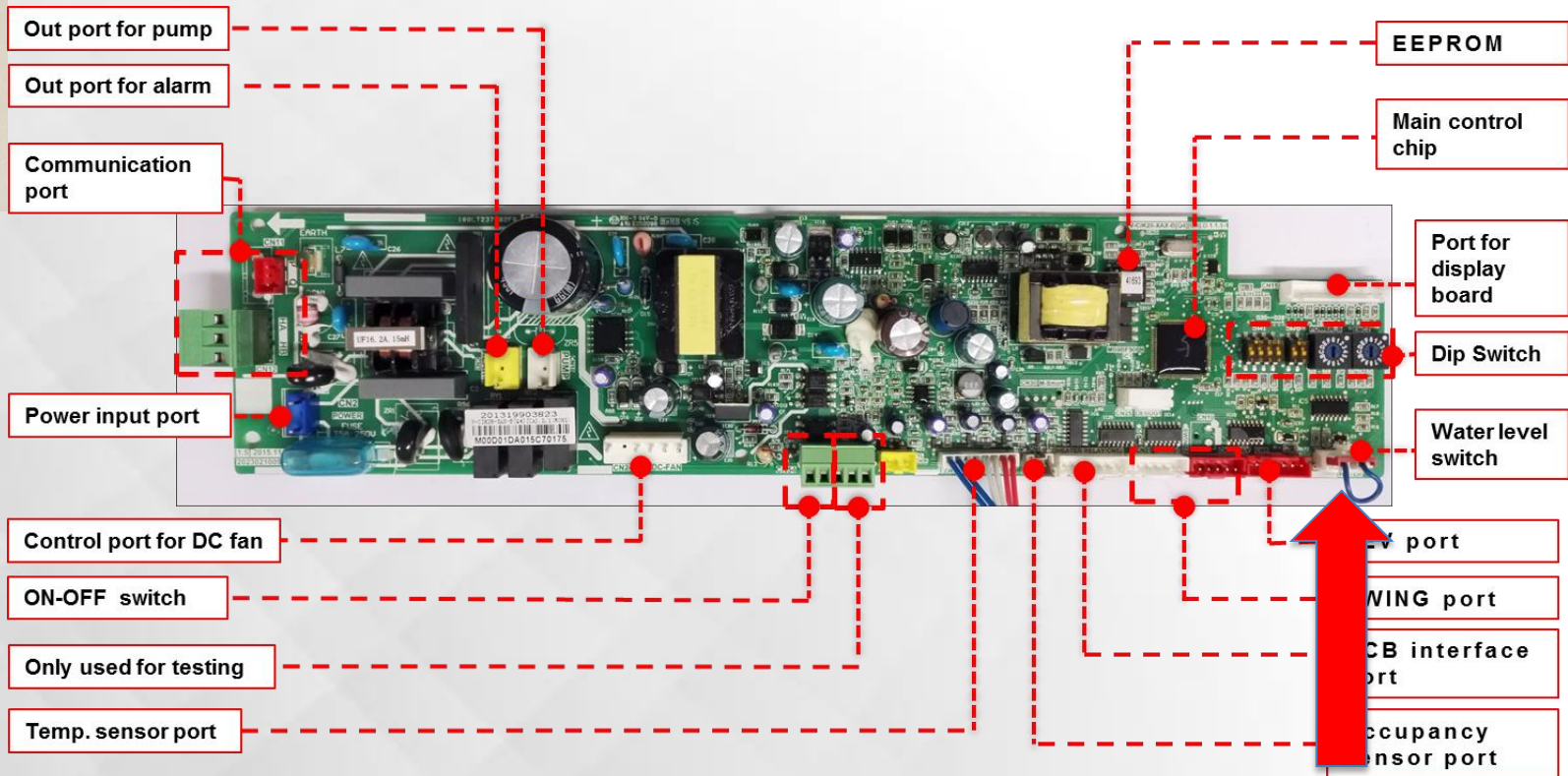
Similar to photo of connector left below



VRF Drain Safety 2 Pipe Heat Recovery

Technical Call

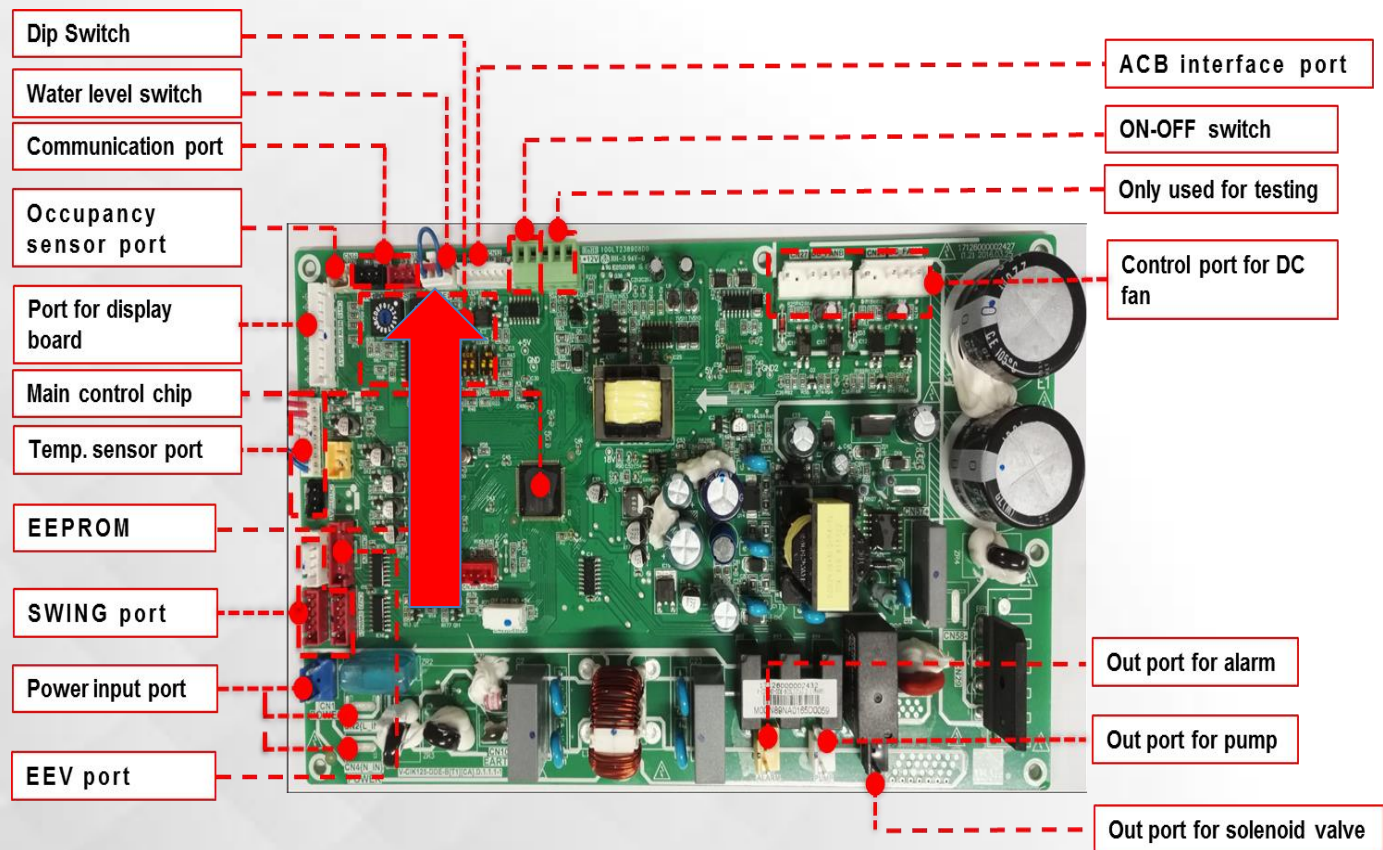
40VMF- CN5 Labeled as “Water” on board
Similar to photo of connector to left



VRF Drain Safety 2 Pipe Heat Recovery

Technical Call

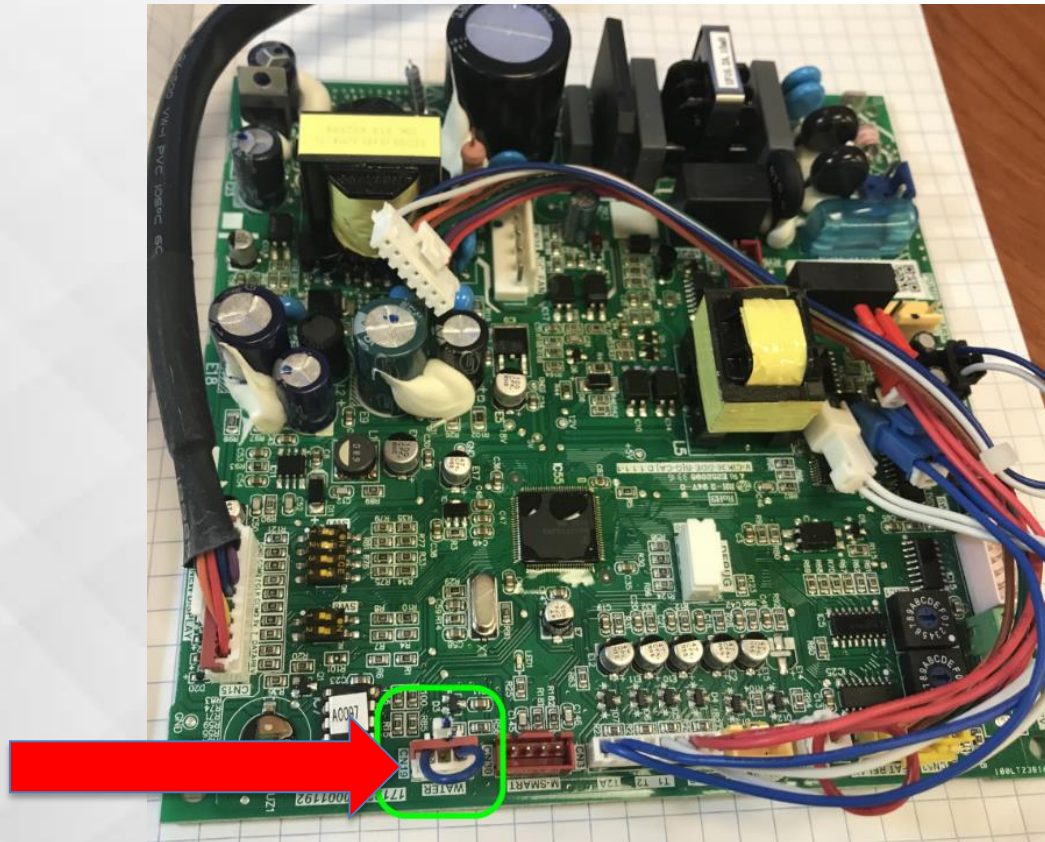
40VMU, VMH, VMA, - CN5 Labeled as “Water” on board
Similar to photo of connector to left



VRF Drain Safety 2 Pipe Heat Recovery

Technical Call

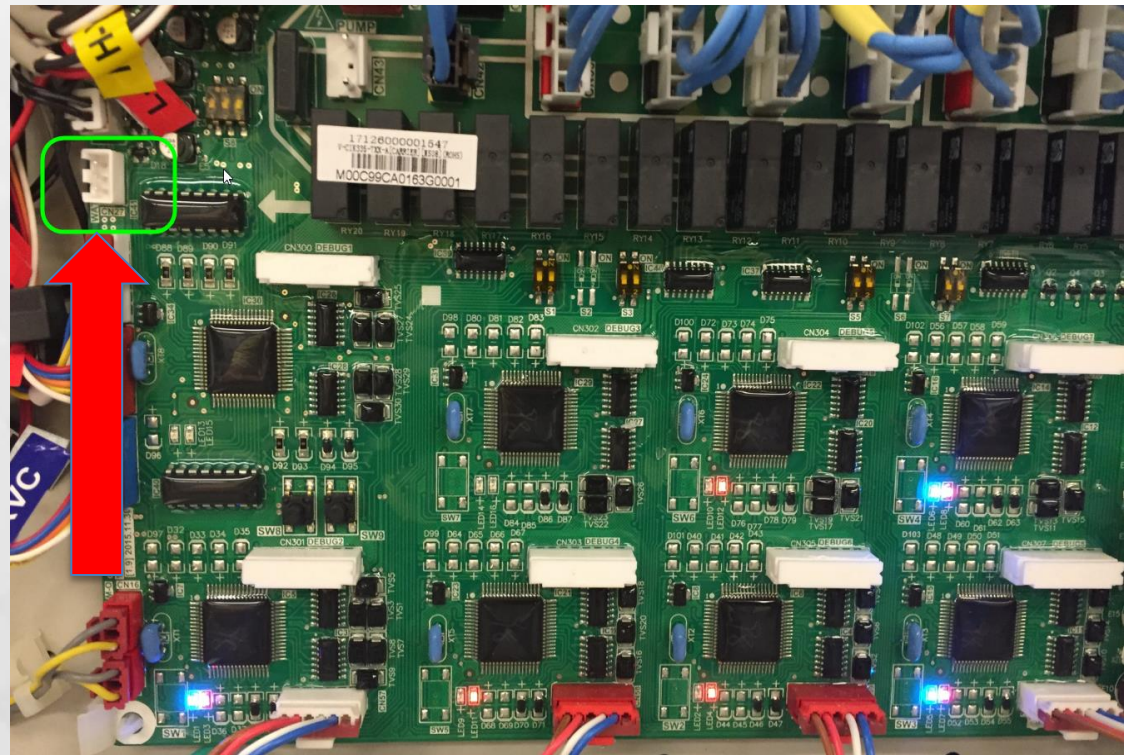
40VMW Highwall- CN19 Labeled as “Water” on board
Similar to photo of connector to left



VRF Drain Safety 2 Pipe Heat Recovery

Technical Call

40VMD- MDC- CN27- Labeled as “Water” on board
Similar to photo of connector to left



VRF Drain Safety 3 Pipe Heat Recovery

Technical Call

Operation terminal (CN61)



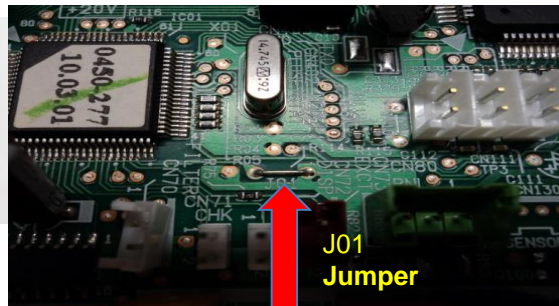
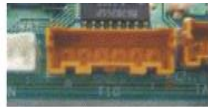
1	ON/OFF input	External ON/OFF control (DN code 2E, J01)
2	0V (Common for Pin. 1,3)	
3	ON/OFF prohibition input	Remote controller ON/OFF prohibition is permitted/ prohibited input signal
4	Operation output (Open collector)	On signal during “remote controller ON & No alarm”
5	DC12V (Common for Pin. 4,6)	
6	Alarm output (Open collector)	On signal during alarm output



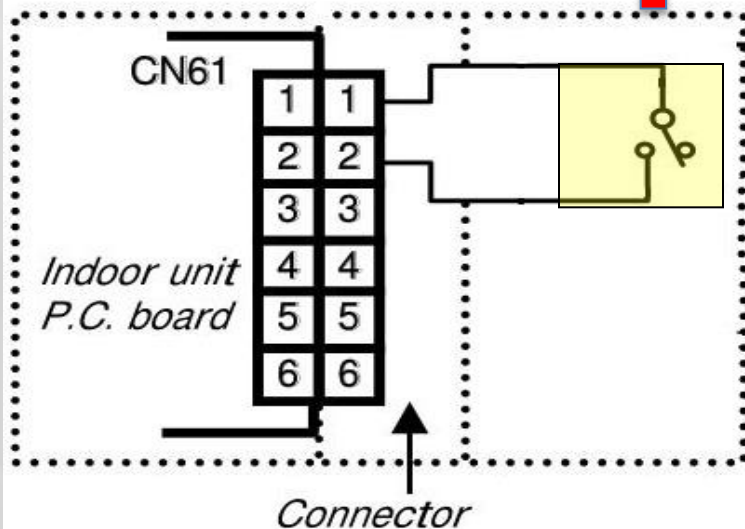
VRF Drain Safety 3 Pipe Heat Recovery

Technical Call

Operation terminal (CN61)



ON/OFF Input



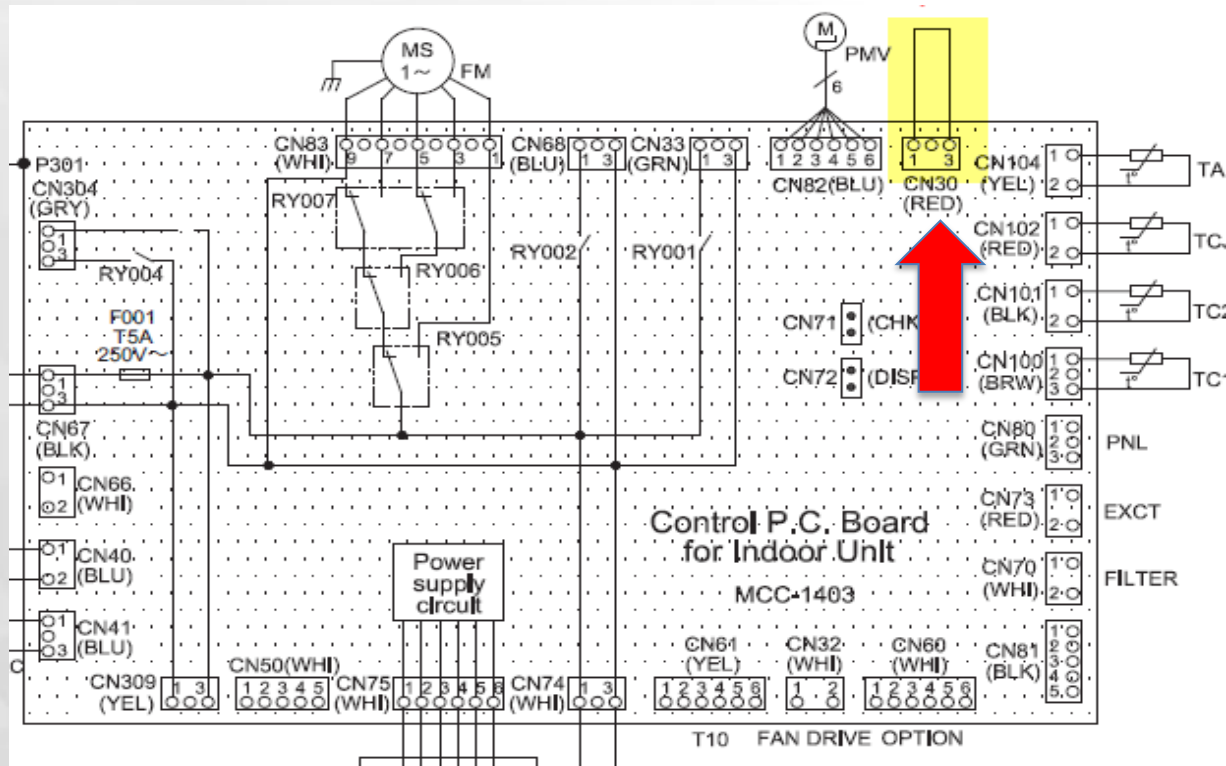
Pin No. & function

No.	Function
1	ON/OFF Input External ON/OFF input
Item code 2E	J01
0000	Connect
(At shipment)	Cut
0001	Connect
Cut	No action
(Item code setting Please refer indoor unit Installation manual)	
2	0V (COM for 1,2 Pin)
3	ON/OFF prohibiting/permitting Input signal make permit/prohibit of individual remote controller ON/OFF (During prohibition, LCD is shown "Central controlling mark")
4	Operation output (Open collector) ON signal output during air conditioner operation (answerback to external)
5	DC 12V (COM for 4,5 Pin)
6	Alarm output (Open collector) ON signal output during alarm operation
Specification of lead wire	
1	Blue
2	White
3	Orange
4	Yellow
5	Red
6	Brown

VRF Drain Safety 3 Pipe Heat Recovery

Technical Call

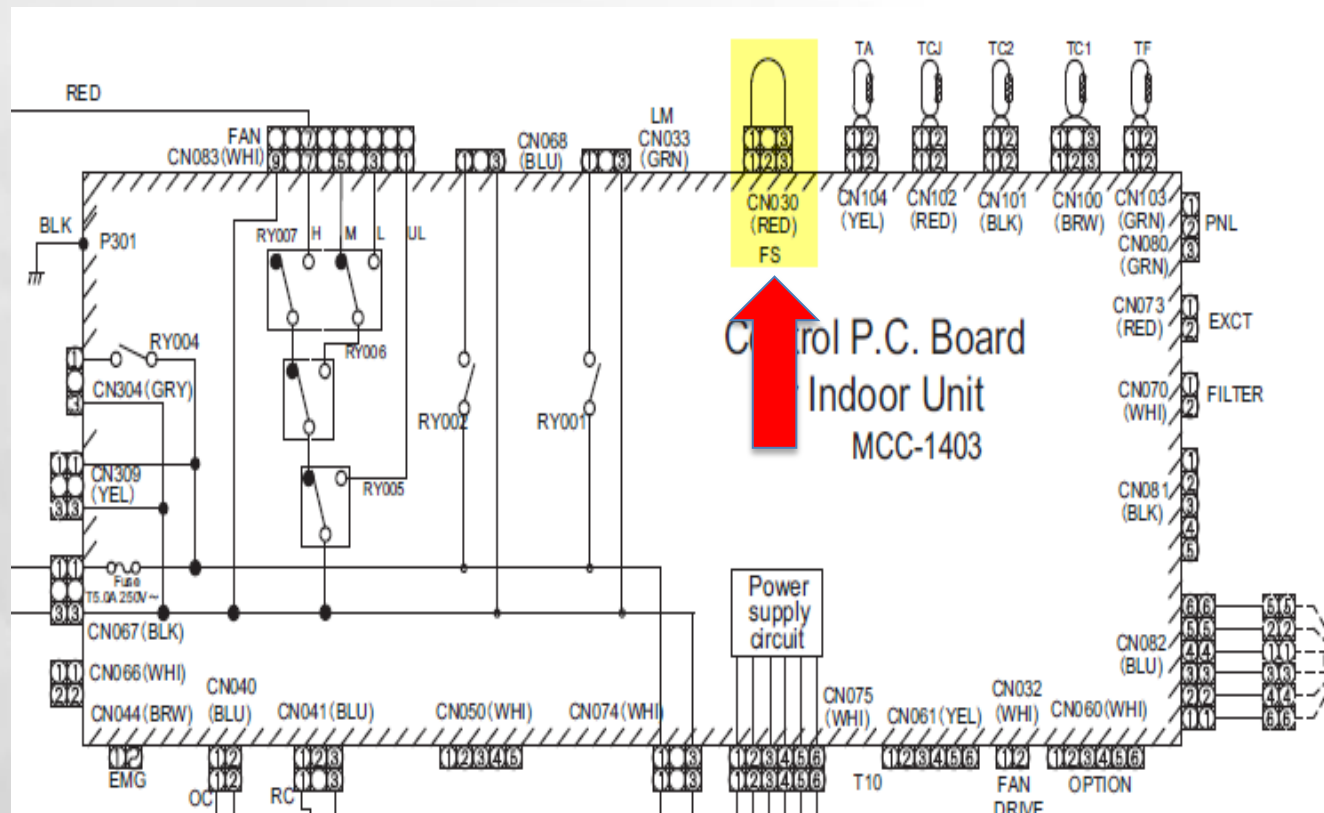
**Floor Console Exposed/Recessed / High Static Ducted
CN30 Shown but not labeled on the diagram**



VRF Drain Safety 3 Pipe Heat Recovery

Technical Call

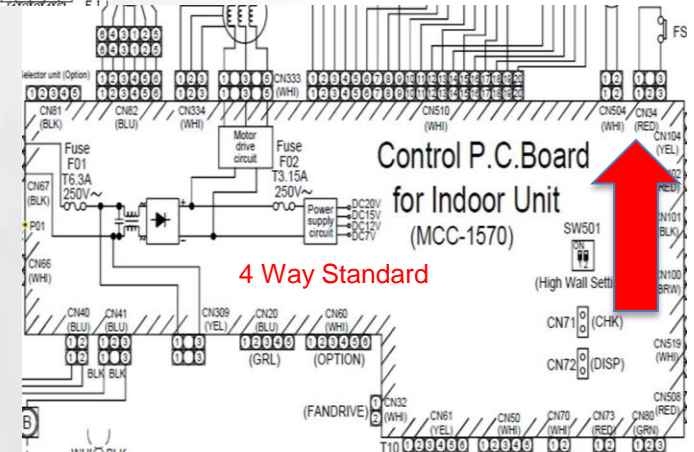
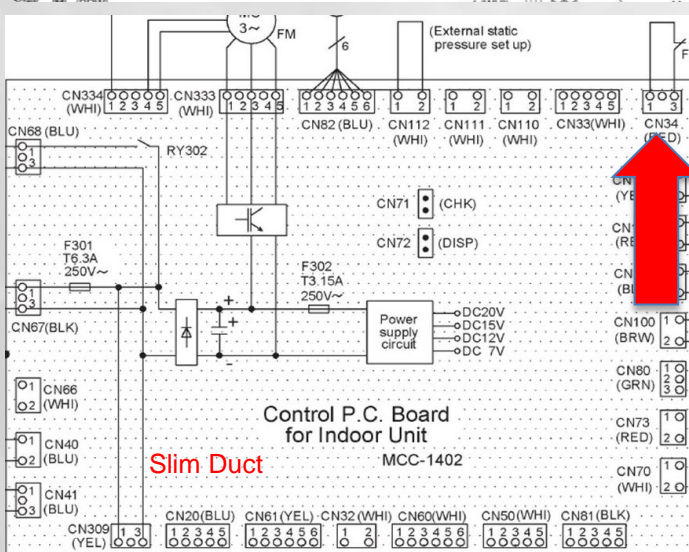
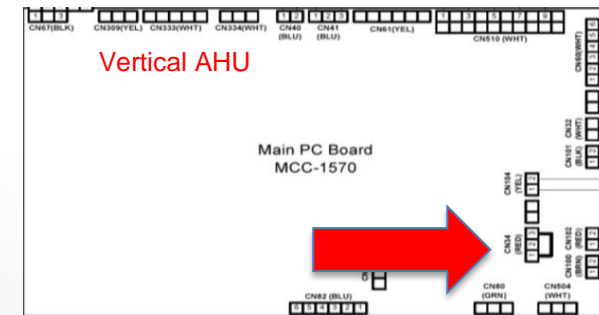
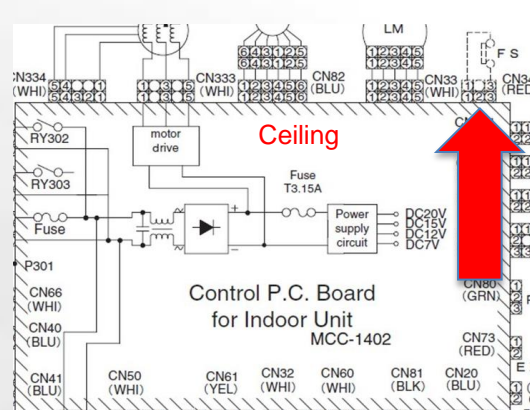
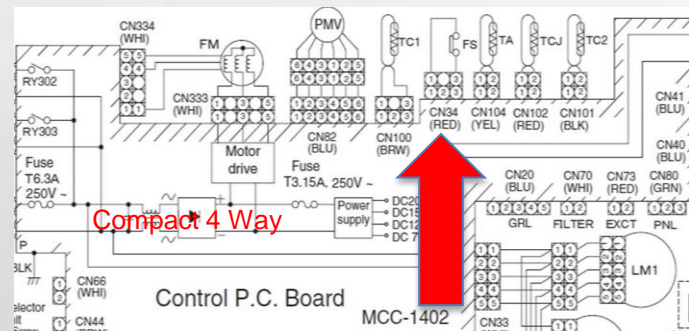
Outside Air Unit CN30 Shown but labeled as FS



VRF Drain Safety 3 Pipe Heat Recovery

Technical Call

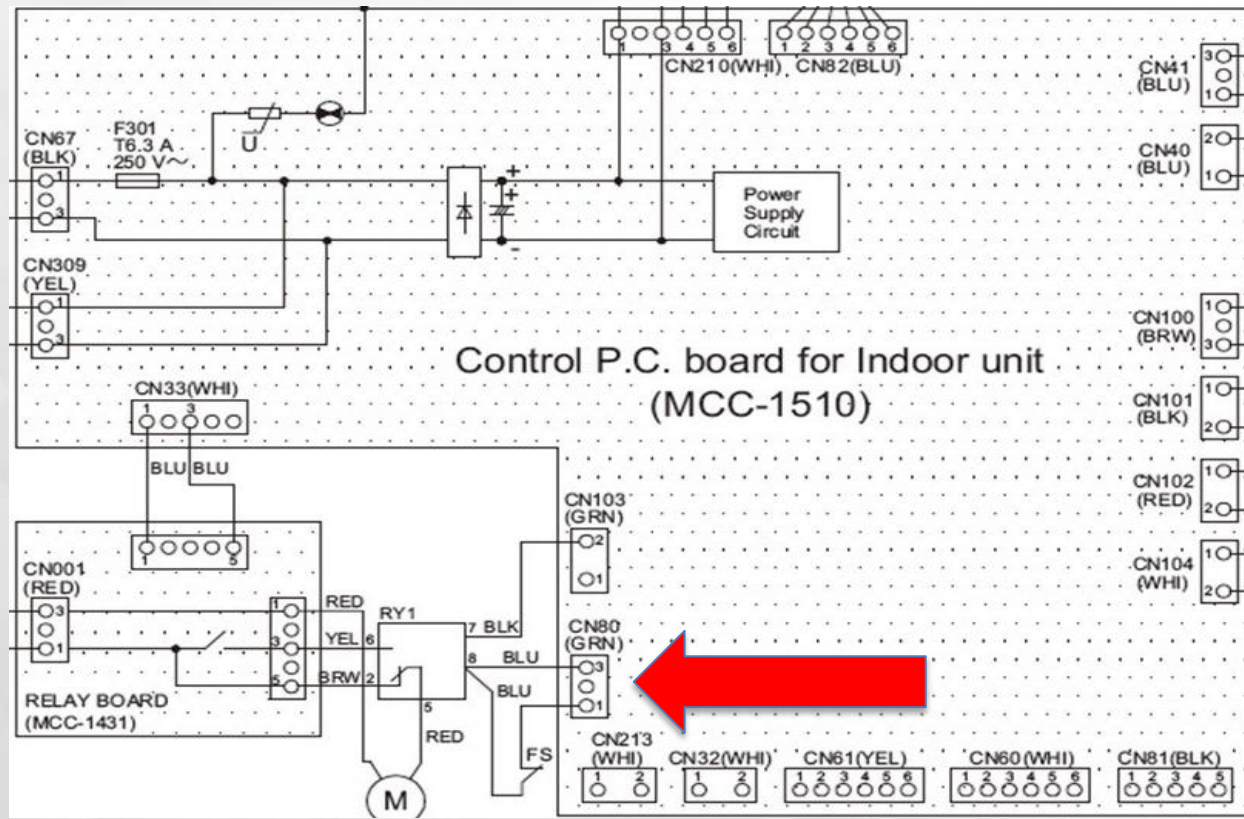
Vertical AHU/ Slim Duct/ Ceiling/ 4 Way Compact/ 4 Way Standard CN34 FS or Float Switch



VRF Drain Safety 3 Pipe Heat Recovery

Technical Call

Concealed Medium Static Duct Unit CN80 Shown but labeled as FS



VRF Drain Safety 3 Pipe Heat Recovery

Technical Call

Indoor unit Type	Model name	PCB board number	Float SW connector number	Float SW connector Assemble
4-Way Cassette	MMU-AP***2H2UL	MCC-1570	CN34(RED)	Float SW
Compact 4-Way Cassette	MMU-AP***1MH2UL	MCC-1402	CN34(RED)	Float SW
Ceiling	MMC-AP***1H2UL	MCC-1402	CN34(RED)	Short PIN
High Wall	MMK-AP***3H2UL	MCC-1510	N/A	N/A
Floor console Exposed	MML-AP***4H2UL	MCC-1403	CN30(RED)	Short PIN
Floor console Recessed	MML-AP***4BH2UL	MCC-1403	CN30(RED)	Short PIN
Slim duct(Low Profile)	MMD-AP***4SPH2UL	MCC-1402	CN34(RED)	Float SW
Concealed duct(Medium Static)	MMD-AP***4BH2UL-1	MCC-1510	CN80(Green)	Float SW
High static duct	MMD-AP0304H2UL MMD-AP0364H2UL MMD-AP0484H2UL	MCC-1403	CN30(RED)	Short PIN
	MMD-AP0726HP-UL MMD-AP0966HP-UL	MCC-1643	CN34(RED)	Short PIN
Outside Air	MMD-AP***1HF2UL	MCC-1403	CN30(RED)	Short PIN
Vertical	MMD-AP***VHG2UL	MCC-1570	CN34(RED)	Short PIN
Rooftop	40QQ***AAA*-0A0	MCC-1570	CN34(RED)	Short PIN

Questions

Technical Call



Questions?

THANK YOU!



UTC Building & Industrial Systems Confidential and Proprietary Information –
Not for Further Distribution

