

Infinity/Evolution Comm Buss Resistance values

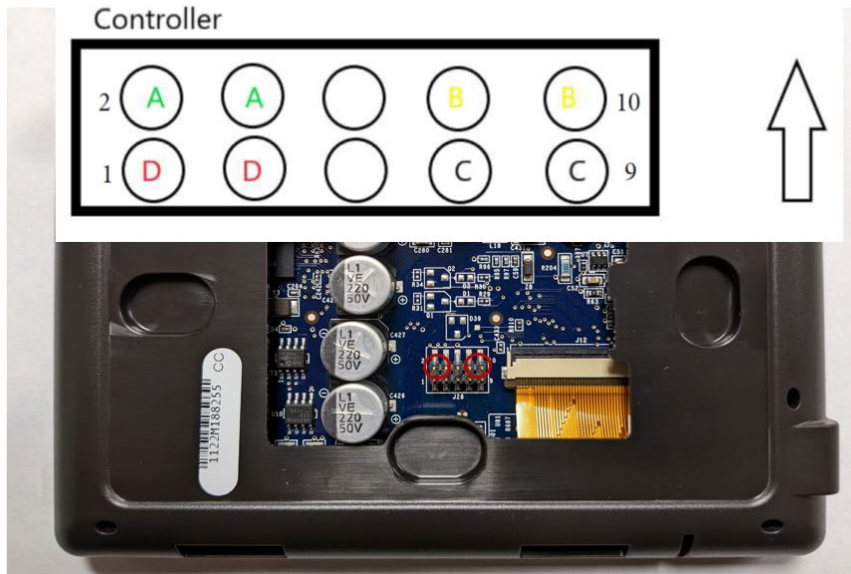
Checked on terminals A&B, unwired and powered down (RED+ on A/BLACK- on B)

All values can be +/- 2K ohms.

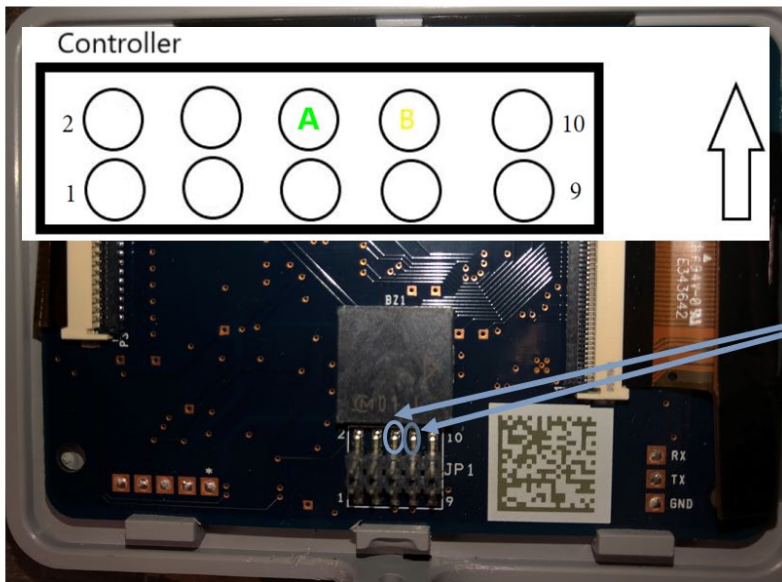
Device	Serial Range	Ohm reading in K (1000)
UI/UZ Legacy thru Touch/Connex –A		71-75K
Touch/Connex-B	Prior 0518W	56-60K
Touch/Connex-B	From 0518W-2219W*	73-76K
Touch/Connex-B	Since 2219W*	89-92K+
Nim/SAM/ Dash C		71-75K
Zone Board/ Old Smart sensor		71-75K
New Smart Sensors		17K-19K
1&2 stage units/ 1st Gen Greenspeed, Extreme		28-34K
5 stage	Prior to 0115E	16-17K
5 stage	Since 0115E	28-34K
Next Gen Greenspeed/ Extreme		19K w/ BTM <u>un</u> plugged, 27K-32Kw/ BTM plugged
Fan coil/Furnace	Prior 5019A	17-19K
Fan coil/ Furnace	since 5019A	28-34K

-B wall controller values per serial range shown are typical, however anything from ~55K to ~95K is usually considered acceptable.

-C TROUBLESHOOTING



TOUCH SMART SENSOR



Nicknames for R410a Inverter Equipment with SEER Ratings

<p>5 Stage/ 18 SEER HP & 19 SEER AC/ 25-100% Capacity/ Rotary/ Toshiba</p>		
AC	24VNA9	189BNV
HP	25VNA8	288BNV
<p>1st Gen Greenspeed/ Extreme/ 20 SEER HP & AC/ 40-100% Capacity/ Scroll/ Emerson</p>		
AC	24VNA0	180CNV
HP	25VNA0	280ANV
<p>Next Gen Greenspeed/ Next Gen Extreme/ 24 SEER HP & 26 SEER AC/ 25-100% Capacity/ 2,3,4 tons = Rotary/5 ton = Scroll/ Samsung</p>		
AC	24VNA6	186CNV
HP	25VNA4	284ANV

R454b Inverter Equipment with SEER2 Ratings

20 SEER2 HP / 21 SEER2 AC 25-100% Capacity /Rotary/ Samsung No Model Plugs		
AC	26VNA1	191VAN
HP	27VNA0	290VAN
23 SEER2 HP/ 25-100% Capacity/ 2= 2+3+4 tons = Rotary/ 5 ton = Scroll/ Samsung No Model Plugs		
AC	none	none
HP	27VNA3	293VAN

Voltage Reading on ABCD

-Voltage Readings - With board Power applied, and No U.I. connected	
A to B	~3 vdc
A to C	~3 vdc
B to C	~.01 to 0.3 vdc
C to D	24 vac
-Voltage Readings - With board Power applied, and U.I. Applied	
A to B	~2.5 to 3.9 vdc (pulsating)
A to C	~2.5 to 3.9 vdc (pulsating)
B to C	~0.1 to 0.9 vdc (pulsating)
C to D	24 vac